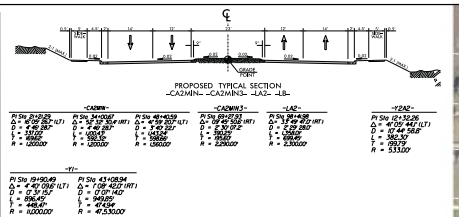


LEGEND

- FILL
- TRANSITION
- CUT
- CORRIDOR
- CITY LIMITS
- HISTORIC PROPERTY BOUNDARY
- WETLAND BOUNDARY
- STREAMS
- STRUCTURES
- EXISTING TRAFFIC SIGNAL
- PROPOSED TRAFFIC SIGNAL
- PAVEMENT REMOVAL
- RIGHT-OF-WAY
- CONSTRUCTION EASEMENT



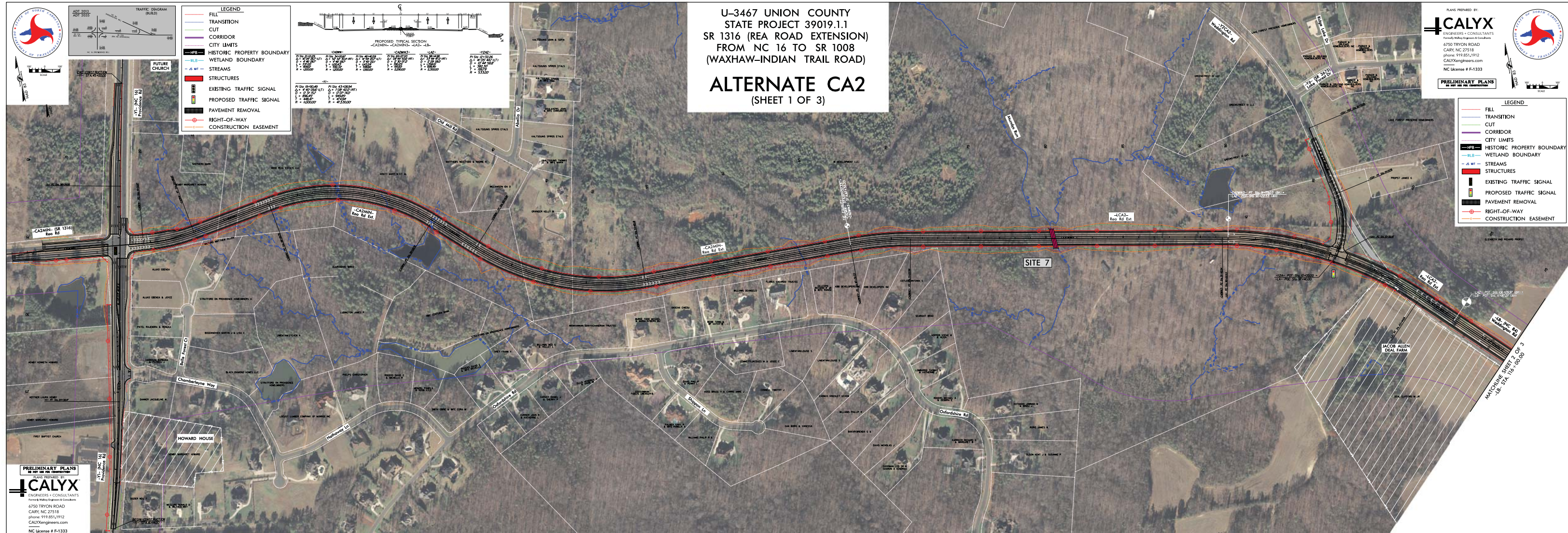
U-3467 UNION COUNTY
STATE PROJECT 39019.1.1
SR 1316 (REA ROAD EXTENSION)
FROM NC 16 TO SR 1008
(WAXHAW-INDIAN TRAIL ROAD)
ALTERNATE CA2
(SHEET 1 OF 3)

PLANS PREPARED BY
CALYX
ENGINEERS & CONSULTANTS
6750 TRYON ROAD
CARY, NC 27518
PHONE: 919.851.9192
CALYXengineers.com
NC License # F-1333

PRELIMINARY PLANS
NO USE FOR CONSTRUCTION

LEGEND

- FILL
- TRANSITION
- CUT
- CORRIDOR
- CITY LIMITS
- HISTORIC PROPERTY BOUNDARY
- WETLAND BOUNDARY
- STREAMS
- STRUCTURES
- EXISTING TRAFFIC SIGNAL
- PROPOSED TRAFFIC SIGNAL
- PAVEMENT REMOVAL
- RIGHT-OF-WAY
- CONSTRUCTION EASEMENT



PRELIMINARY PLANS
NO USE FOR CONSTRUCTION

CALYX
ENGINEERS & CONSULTANTS
6750 TRYON ROAD
CARY, NC 27518
PHONE: 919.851.9192
CALYXengineers.com
NC License # F-1333

MATCHLINE SHEET 2 OF 3
-LR 517A, 10+100.00



U-3467 UNION COUNTY
STATE PROJECT 39019.1.1
SR 1316 (REA ROAD EXTENSION)
FROM NC 16 TO SR 1008
(WAXHAW-INDIAN TRAIL ROAD)

ALTERNATE CA2
(SHEET 2 OF 3)

PLANS PREPARED BY:
CALYX
ENGINEERS + CONSULTANTS
Formerly Mulvey Engineers & Consultants
6750 TRYON ROAD
CARY, NC 27518
phone: 919.851.1912
CALYXengineers.com
NC License # F-1333

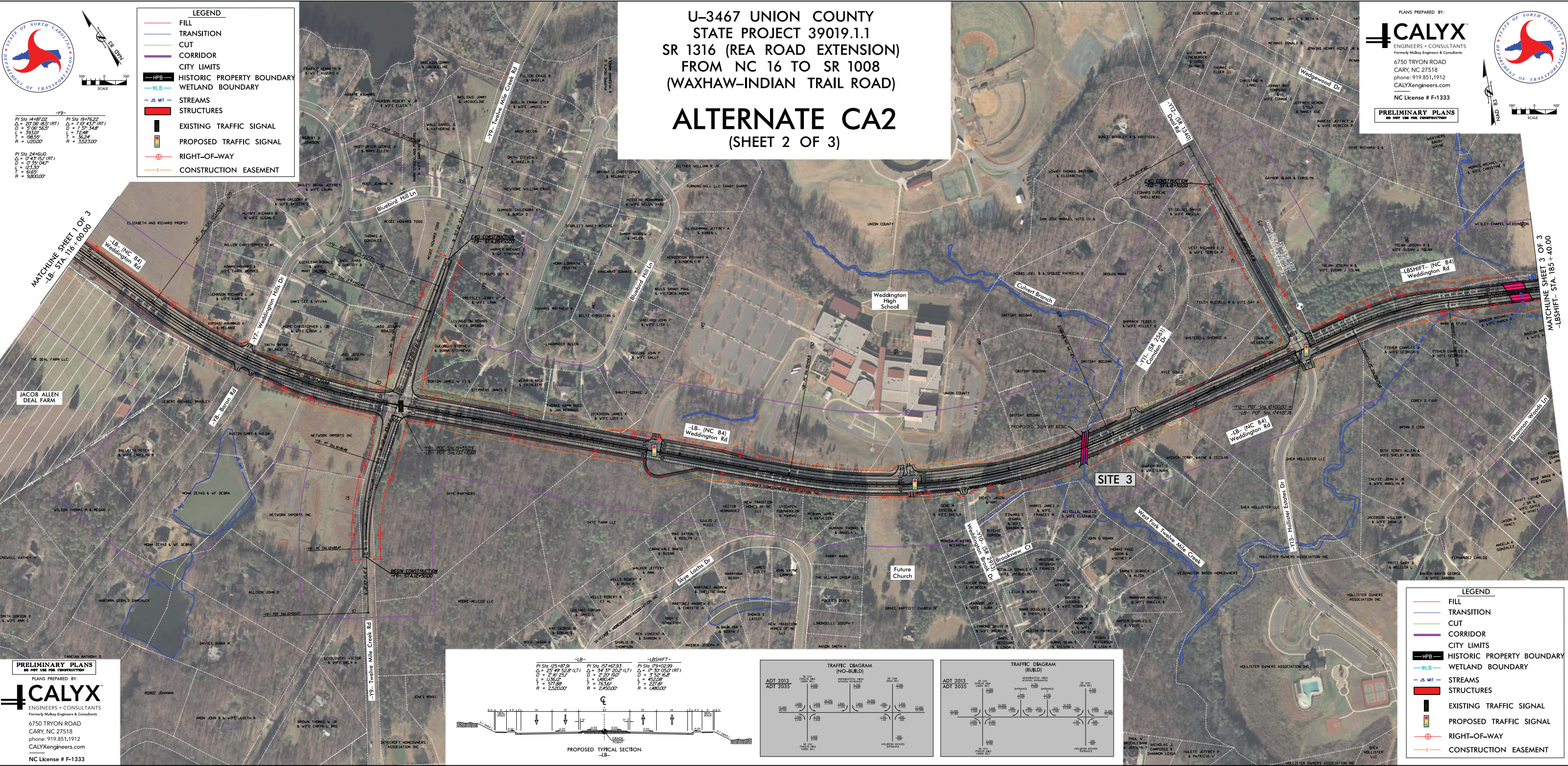
PRELIMINARY PLANS
DO NOT USE FOR CONSTRUCTION

- LEGEND**
- FILL
 - TRANSITION
 - CUT
 - CORRIDOR
 - CITY LIMITS
 - HISTORIC PROPERTY BOUNDARY
 - WETLAND BOUNDARY
 - JS MIT
 - STREAMS
 - STRUCTURES
 - EXISTING TRAFFIC SIGNAL
 - PROPOSED TRAFFIC SIGNAL
 - RIGHT-OF-WAY
 - CONSTRUCTION EASEMENT

PI Sta 14187.02
Δ = 20' 08" 85.5" (RT)
D = 5' 00" 56.5"
L = 393.07'
T = 58.55'
R = 1282.00'

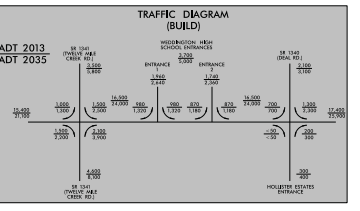
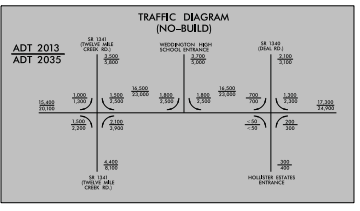
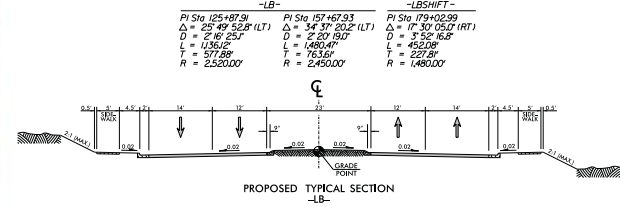
PI Sta 19176.22
Δ = 1' 01" 43.7" (RT)
D = 1' 30" 54.8"
L = 72.48'
T = 36.54'
R = 352.100'

PI Sta 24610.0
Δ = 0' 59" 04.7" (RT)
D = 1' 00" 00.0"
L = 61.53'
T = 61.53'
R = 3850.00'



PRELIMINARY PLANS
DO NOT USE FOR CONSTRUCTION

PLANS PREPARED BY:
CALYX
ENGINEERS + CONSULTANTS
Formerly Mulvey Engineers & Consultants
6750 TRYON ROAD
CARY, NC 27518
phone: 919.851.1912
CALYXengineers.com
NC License # F-1333



- LEGEND**
- FILL
 - TRANSITION
 - CUT
 - CORRIDOR
 - CITY LIMITS
 - HISTORIC PROPERTY BOUNDARY
 - WETLAND BOUNDARY
 - JS MIT
 - STREAMS
 - STRUCTURES
 - EXISTING TRAFFIC SIGNAL
 - PROPOSED TRAFFIC SIGNAL
 - RIGHT-OF-WAY
 - CONSTRUCTION EASEMENT



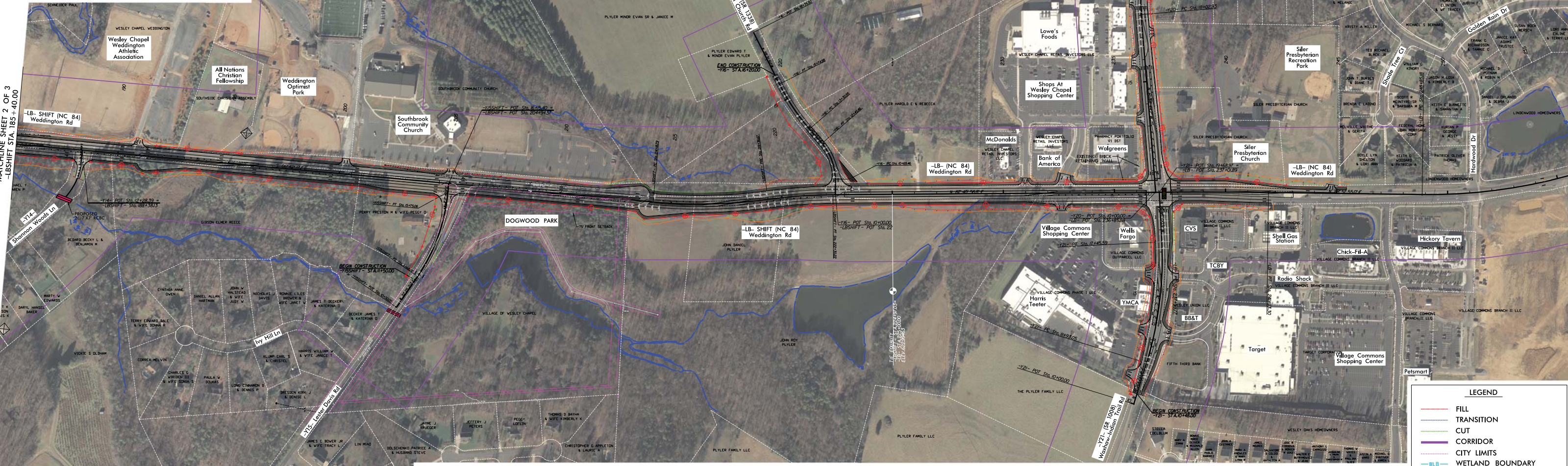
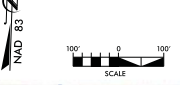
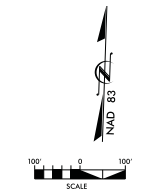
U-3467 UNION COUNTY
STATE PROJECT 39019.1.1
SR 1316 (REA ROAD EXTENSION)
FROM NC 16 TO SR 1008
(WAXHAW-INDIAN TRAIL ROAD)

ALTERNATE CA2
(SHEET 3 OF 3)

PLANS PREPARED BY:
CALYX
ENGINEERS + CONSULTANTS
Formerly Malley Engineers & Consultants
6750 TRYON ROAD
CARY, NC 27518
phone: 919.851.1912
CALYXengineers.com
NC License # F-1333

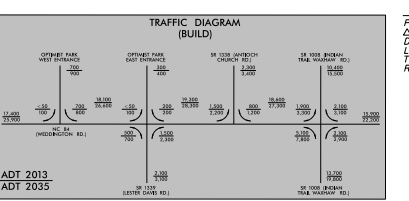
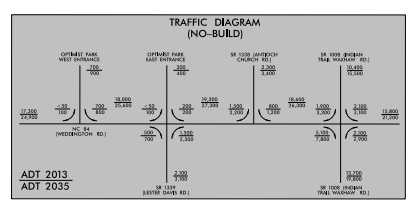
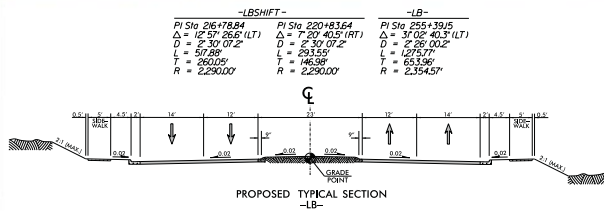
PRELIMINARY PLANS
DO NOT USE FOR CONSTRUCTION

- LEGEND**
- FILL
 - TRANSITION
 - CUT
 - CORRIDOR
 - CITY LIMITS
 - WETLAND BOUNDARY
 - JS MIT
 - STREAMS
 - █ STRUCTURES
 - █ EXISTING TRAFFIC SIGNAL
 - █ PROPOSED TRAFFIC SIGNAL
 - █ PAVEMENT REMOVAL
 - ⊕ RIGHT-OF-WAY
 - CONSTRUCTION EASEMENT



PRELIMINARY PLANS
DO NOT USE FOR CONSTRUCTION

PLANS PREPARED BY:
CALYX
ENGINEERS + CONSULTANTS
Formerly Malley Engineers & Consultants
6750 TRYON ROAD
CARY, NC 27518
phone: 919.851.1912
CALYXengineers.com
NC License # F-1333



Station	PI Sta	PI Sta	PI Sta	PI Sta
10+36.24	11+29.56	14+53.59	14+62.20	14+62.20
$\Delta = 22' 36" 35.4' (LT)$	$\Delta = 22' 36" 35.4' (LT)$	$\Delta = 16' 01" 54.4' (RT)$	$\Delta = 40' 51" 18.2' (LT)$	$\Delta = 40' 51" 18.2' (LT)$
$D = 17' 28" 06.3"$	$D = 17' 28" 06.3"$	$D = 5' 47" 14.8"$	$D = 27' 55" 05.9"$	$D = 27' 55" 05.9"$
$L = 97.50'$	$L = 97.50'$	$L = 34.40'$	$L = 176.00'$	$L = 176.00'$
$T = 36.24'$	$T = 49.37'$	$T = 122.54'$	$T = 9.83'$	$T = 9.83'$
$R = 328.00'$	$R = 243.68'$	$R = 990.00'$	$R = 293.00'$	$R = 293.00'$

- LEGEND**
- FILL
 - TRANSITION
 - CUT
 - CORRIDOR
 - CITY LIMITS
 - WETLAND BOUNDARY
 - JS MIT
 - STREAMS
 - █ STRUCTURES
 - █ EXISTING TRAFFIC SIGNAL
 - █ PROPOSED TRAFFIC SIGNAL
 - █ PAVEMENT REMOVAL
 - ⊕ RIGHT-OF-WAY
 - CONSTRUCTION EASEMENT