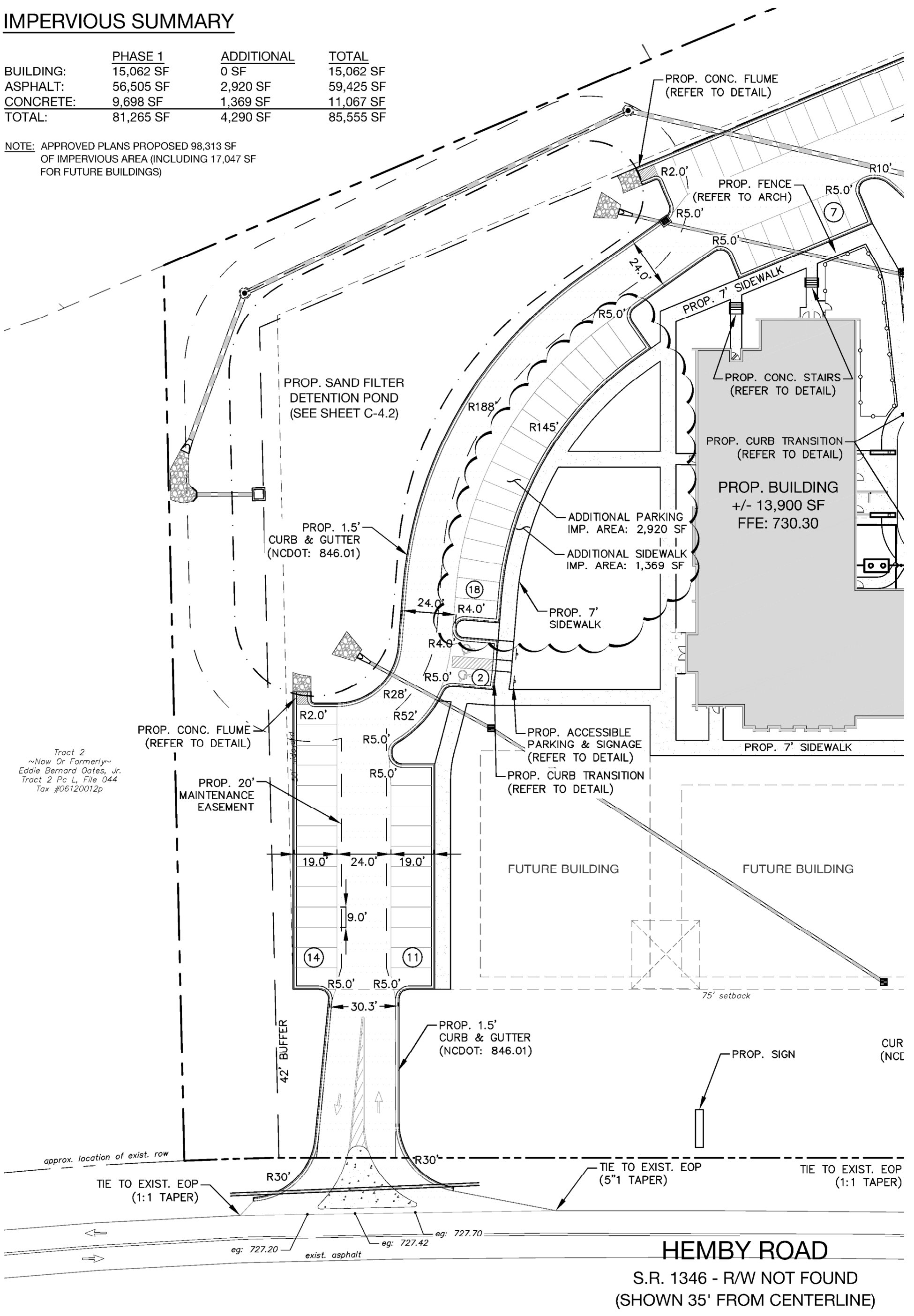


IMPERVIOUS SUMMARY

	PHASE 1	ADDITIONAL	TOTAL
BUILDING:	15,062 SF	0 SF	15,062 SF
ASPHALT:	56,505 SF	2,920 SF	59,425 SF
CONCRETE:	9,698 SF	1,369 SF	11,067 SF
TOTAL:	81,265 SF	4,290 SF	85,555 SF

NOTE: APPROVED PLANS PROPOSED 98,313 SF OF IMPERVIOUS AREA (INCLUDING 17,047 SF FOR FUTURE BUILDINGS)



Tract 2
~Now Or Formerly~
Eddie Bernard Oates, Jr.
Tract 2 P.C.L., File 044
Tax #06120012p

HEMBY ROAD
S.R. 1346 - R/W NOT FOUND
(SHOWN 35' FROM CENTERLINE)

PROJECT NO: 14-075
DATE: 07.05.17
DESIGNED BY: udp
SCALE: 1"=40'

B-2
SHEET NO

All Saints Anglican Church

Bulletin #2
Parking Revision

All Saints Anglican Church

1312 Matthews-Mint Hill Rd
Matthews, NC 28105



URBAN DESIGN PARTNERS
1318-e6 central ave. P. 704-334-3303
charlotte, nc 28205 F. 704-334-3305