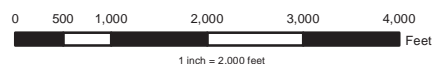
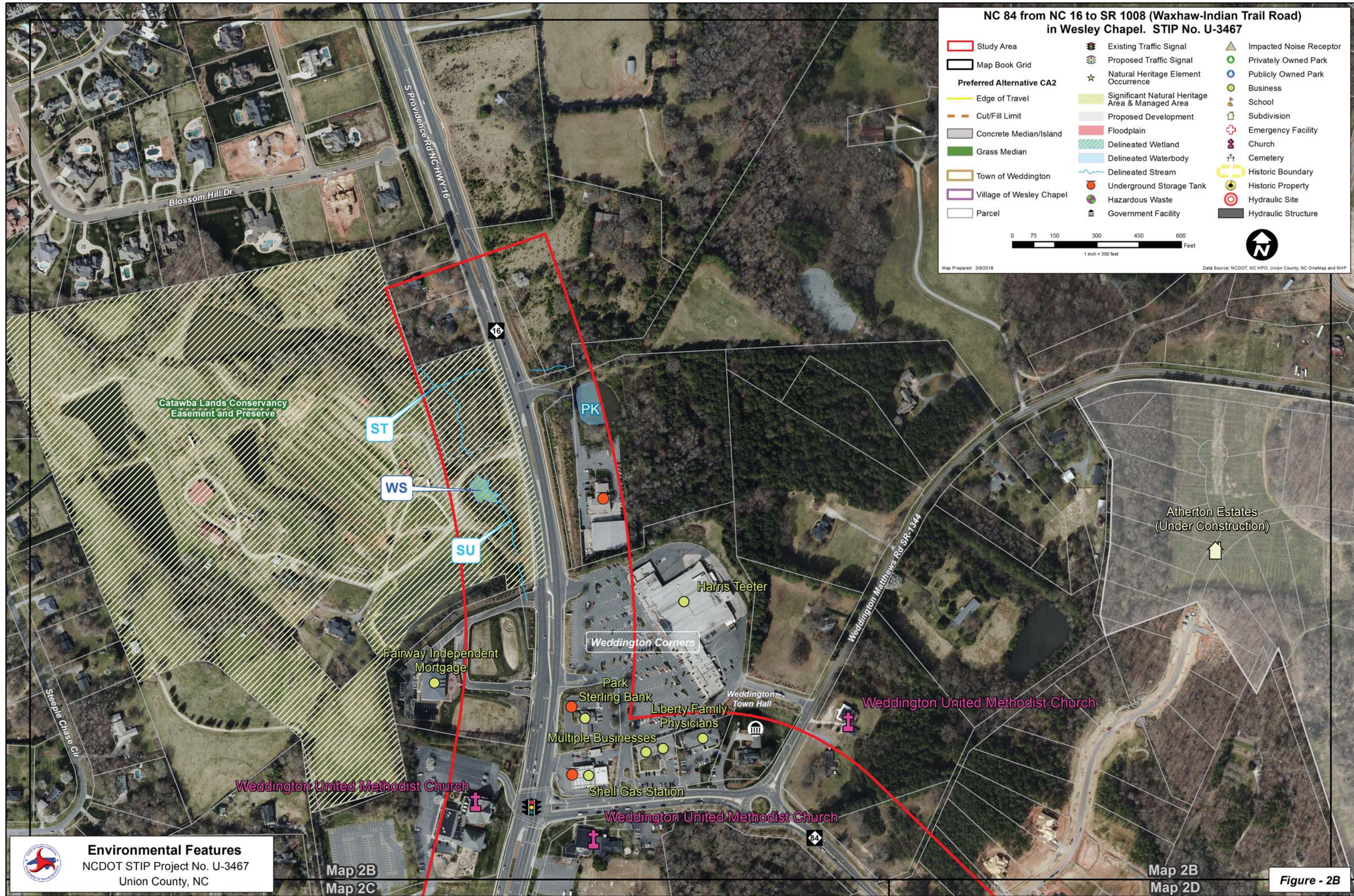


**NC 84 from NC 16 to SR 1008 (Waxhaw-Indian Trail Road)
in Wesley Chapel. STIP No. U-3467**

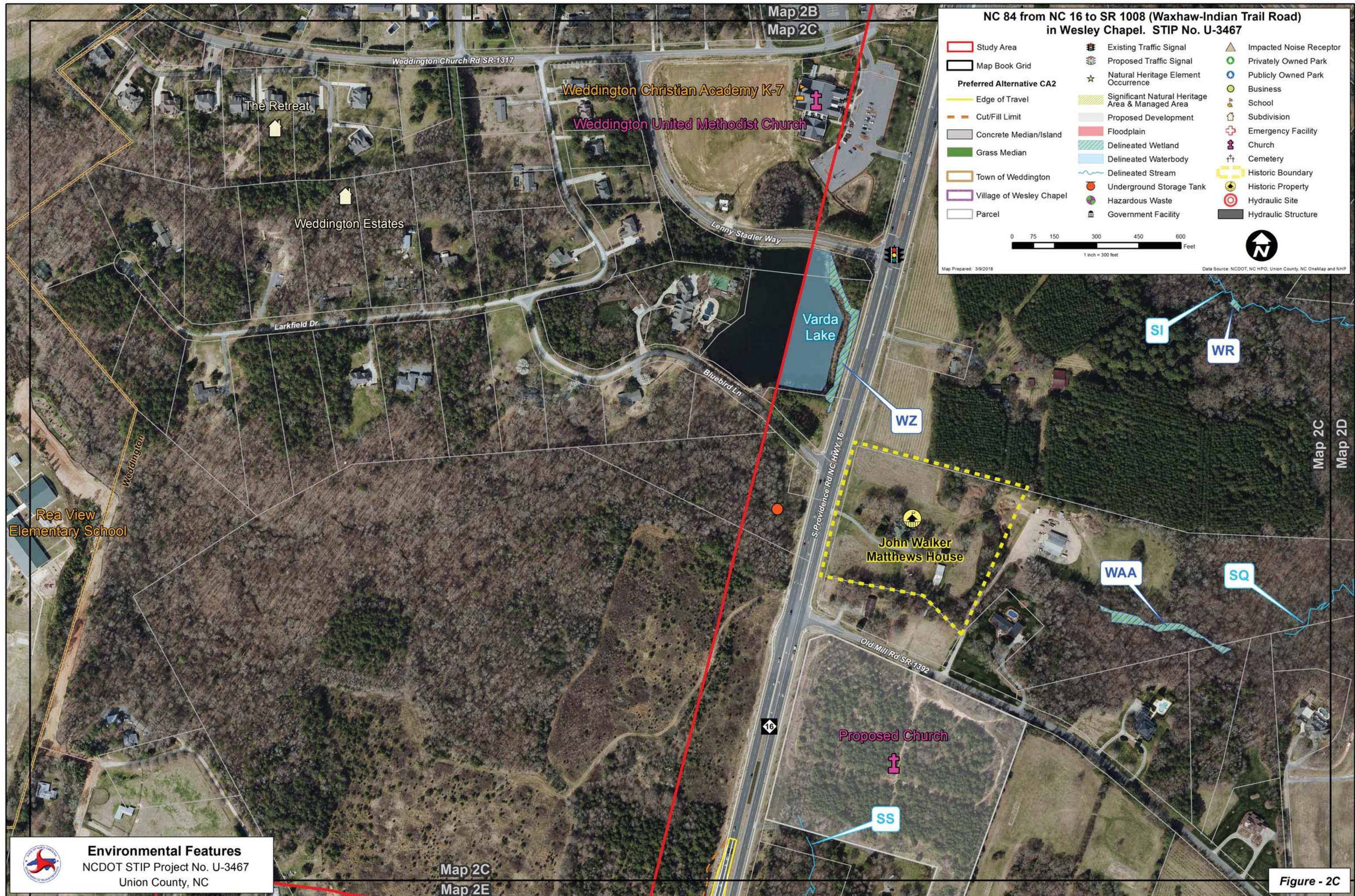
- | | | |
|----------------------------------|--|-------------------------|
| Study Area | Existing Traffic Signal | Impacted Noise Receptor |
| Map Book Grid | Proposed Traffic Signal | Privately Owned Park |
| Preferred Alternative CA2 | Natural Heritage Element Occurrence | Publicly Owned Park |
| Edge of Travel | Significant Natural Heritage Area & Managed Area | Business |
| Cut/Fill Limit | Proposed Development | School |
| Concrete Median/Island | Floodplain | Subdivision |
| Grass Median | Delineated Wetland | Emergency Facility |
| Town of Weddington | Delineated Waterbody | Church |
| Village of Wesley Chapel | Delineated Stream | Cemetery |
| Parcel | Underground Storage Tank | Historic Boundary |
| Hazardous Waste | Historic Property | Hydraulic Site |
| Government Facility | Hydraulic Structure | |





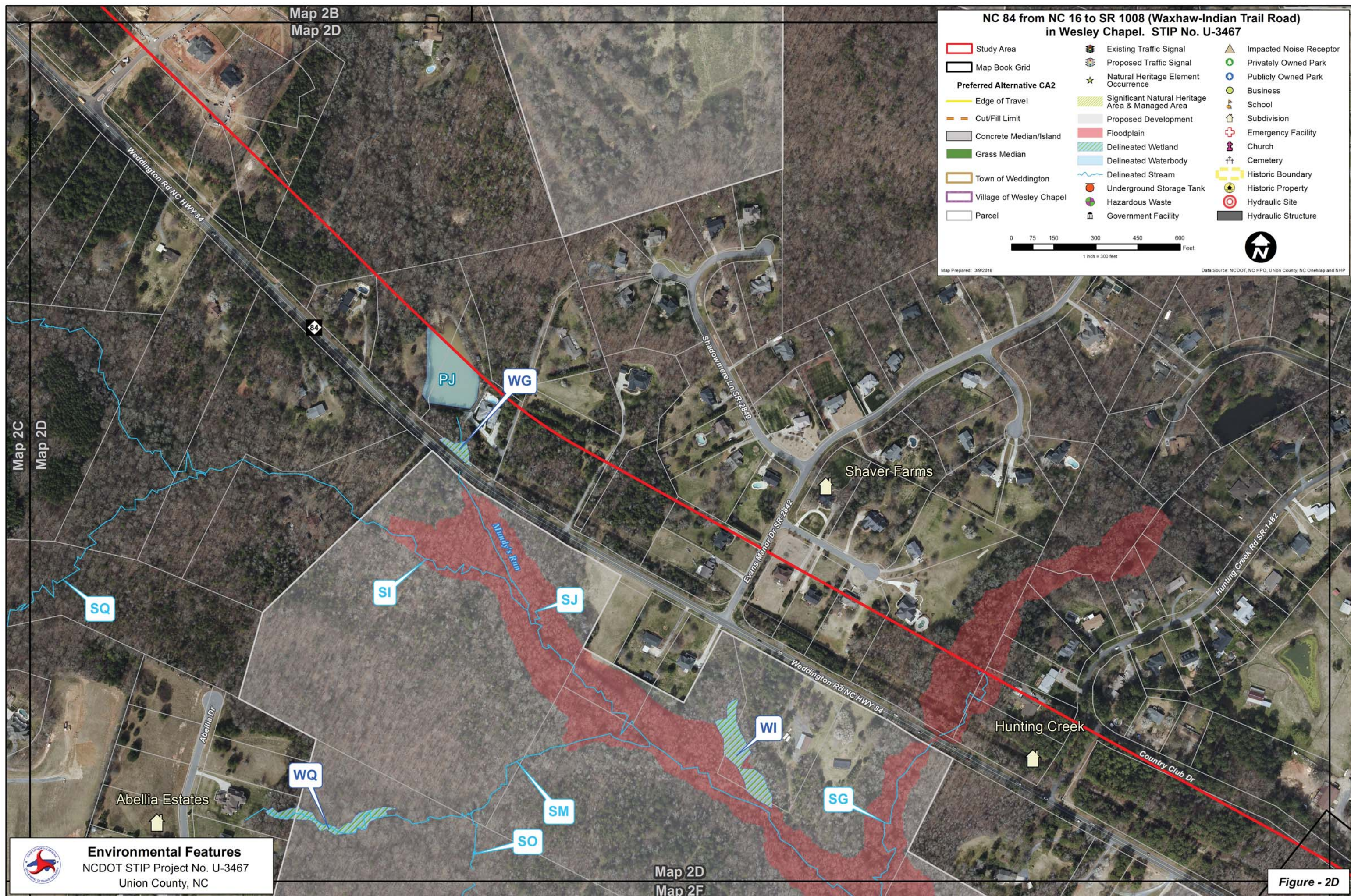
Environmental Features
NCDOT STIP Project No. U-3467
Union County, NC

Figure - 2B



Environmental Features
NCDOT STIP Project No. U-3467
Union County, NC

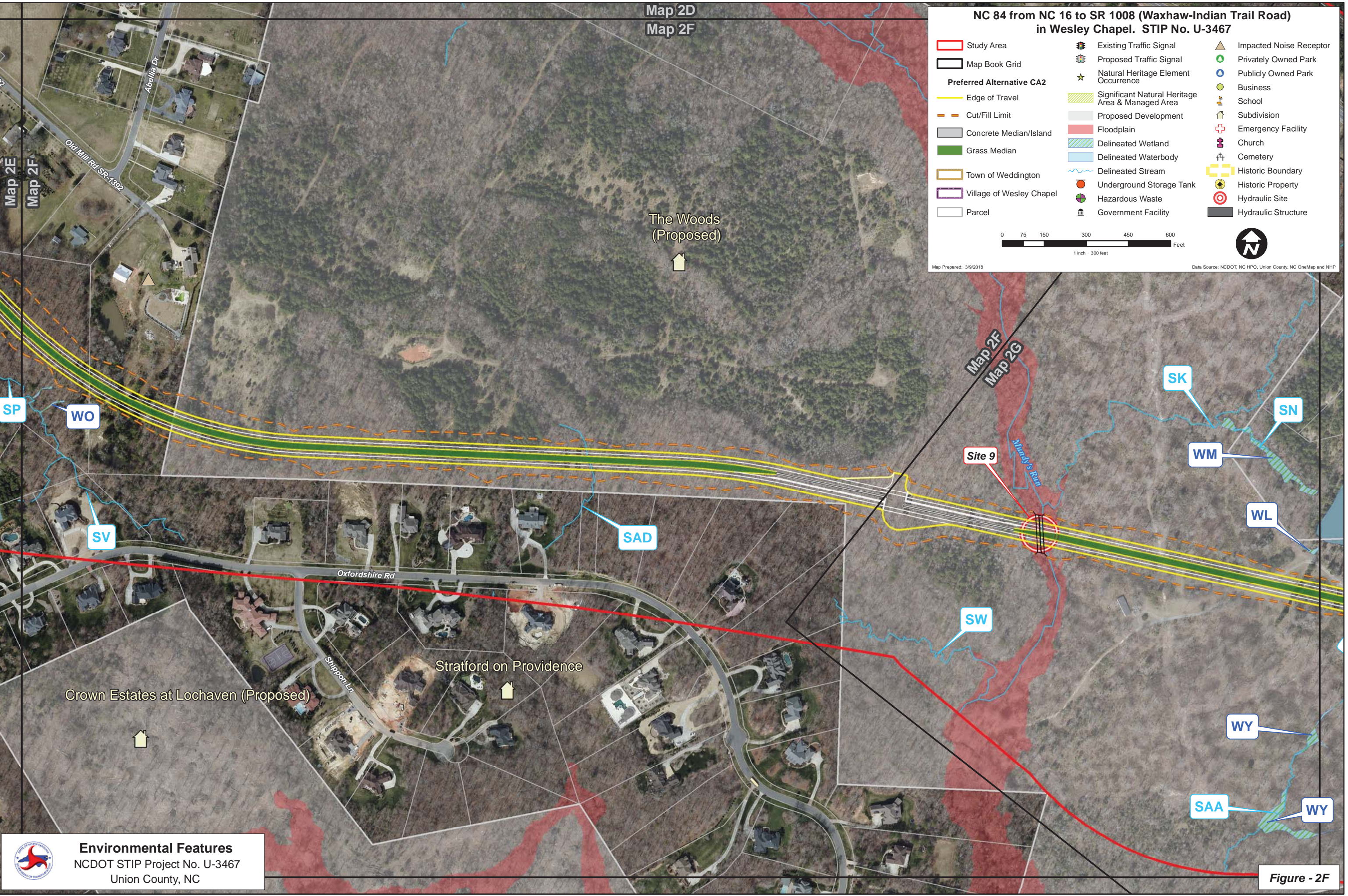
Figure - 2C





Environmental Features
NCDOT STIP Project No. U-3467
Union County, NC

Figure - 2E



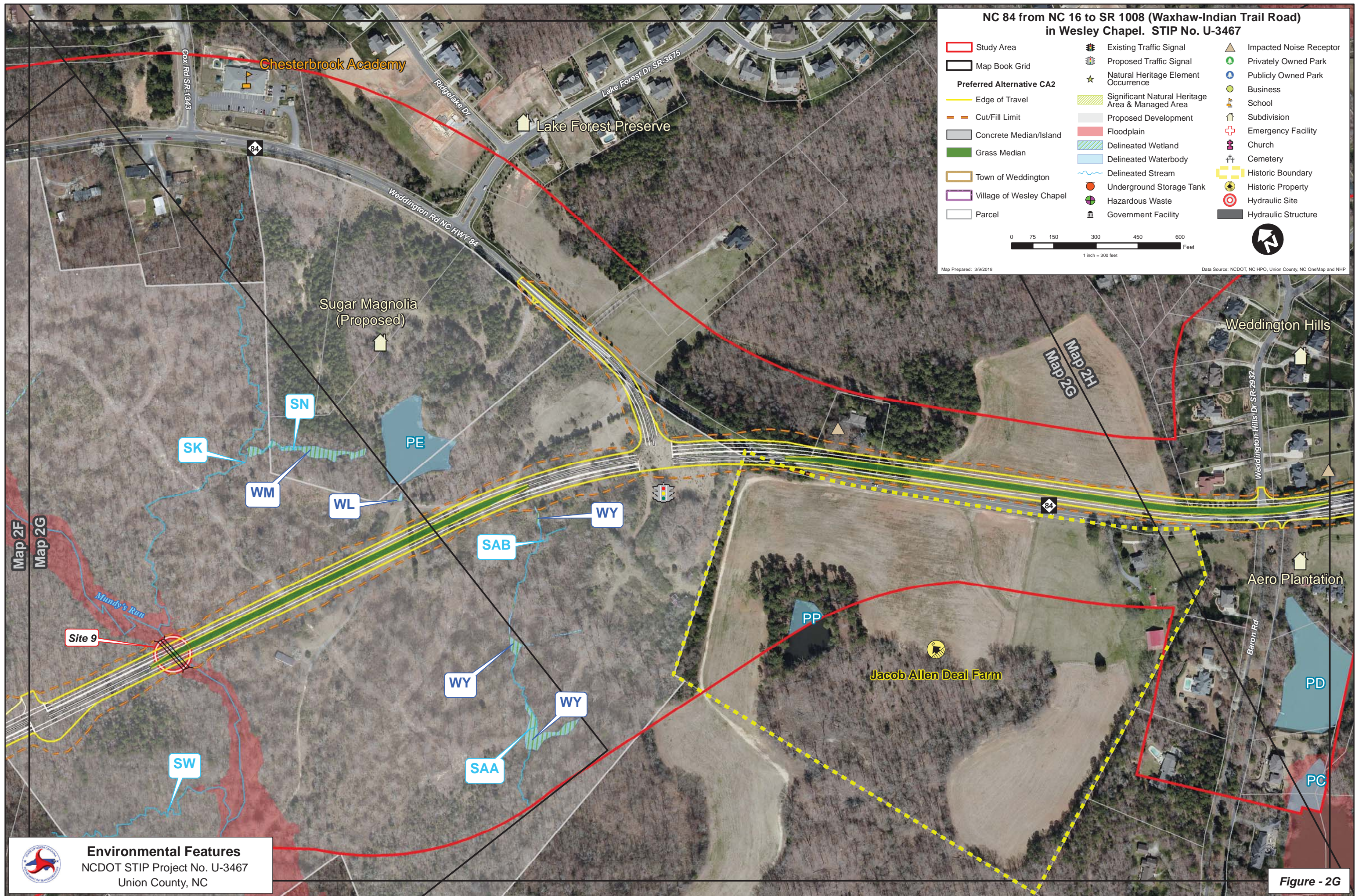
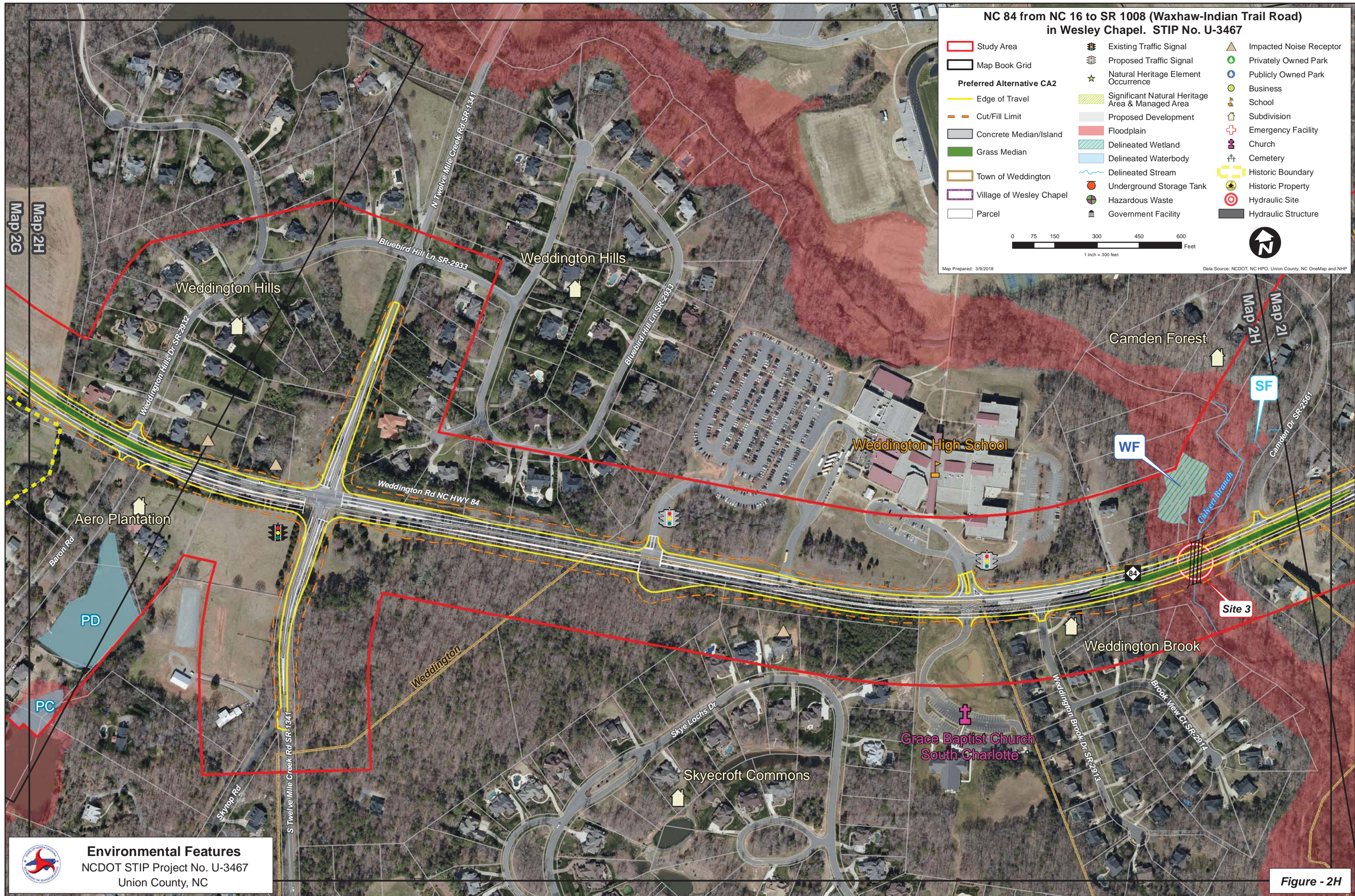
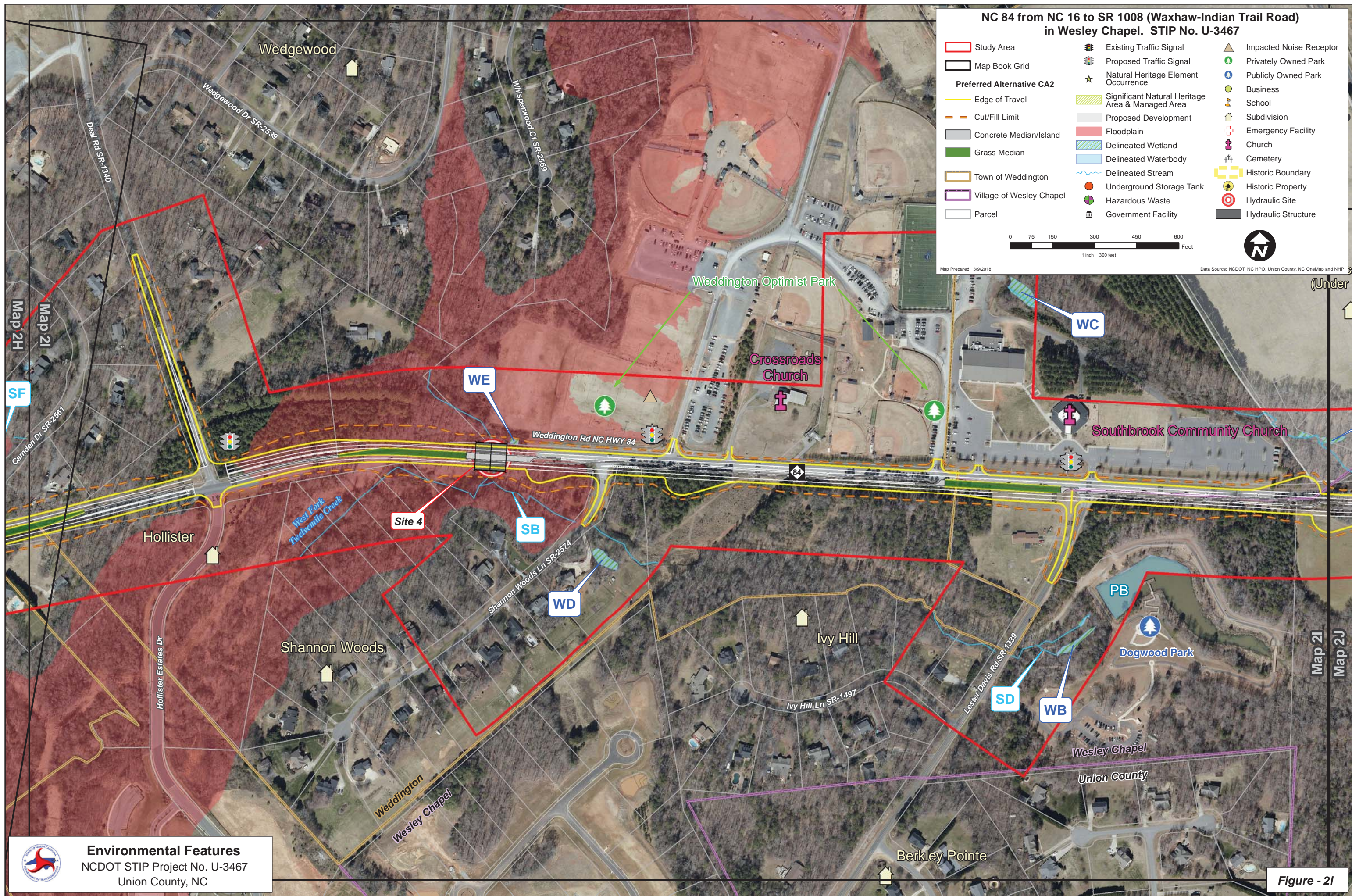


Figure - 2G





Environmental Features
NCDOT STIP Project No. U-3467
Union County, NC

Figure - 2I

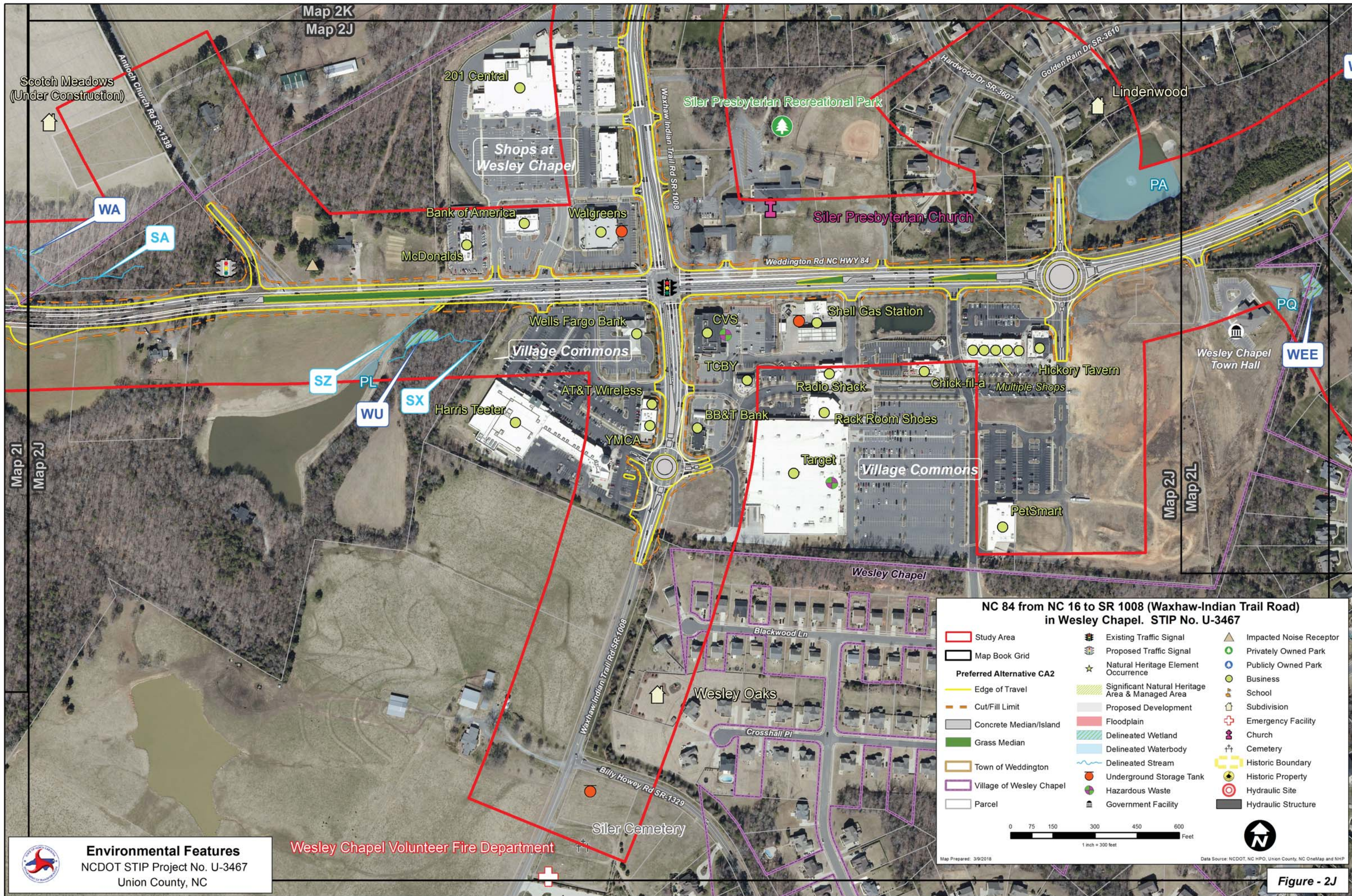
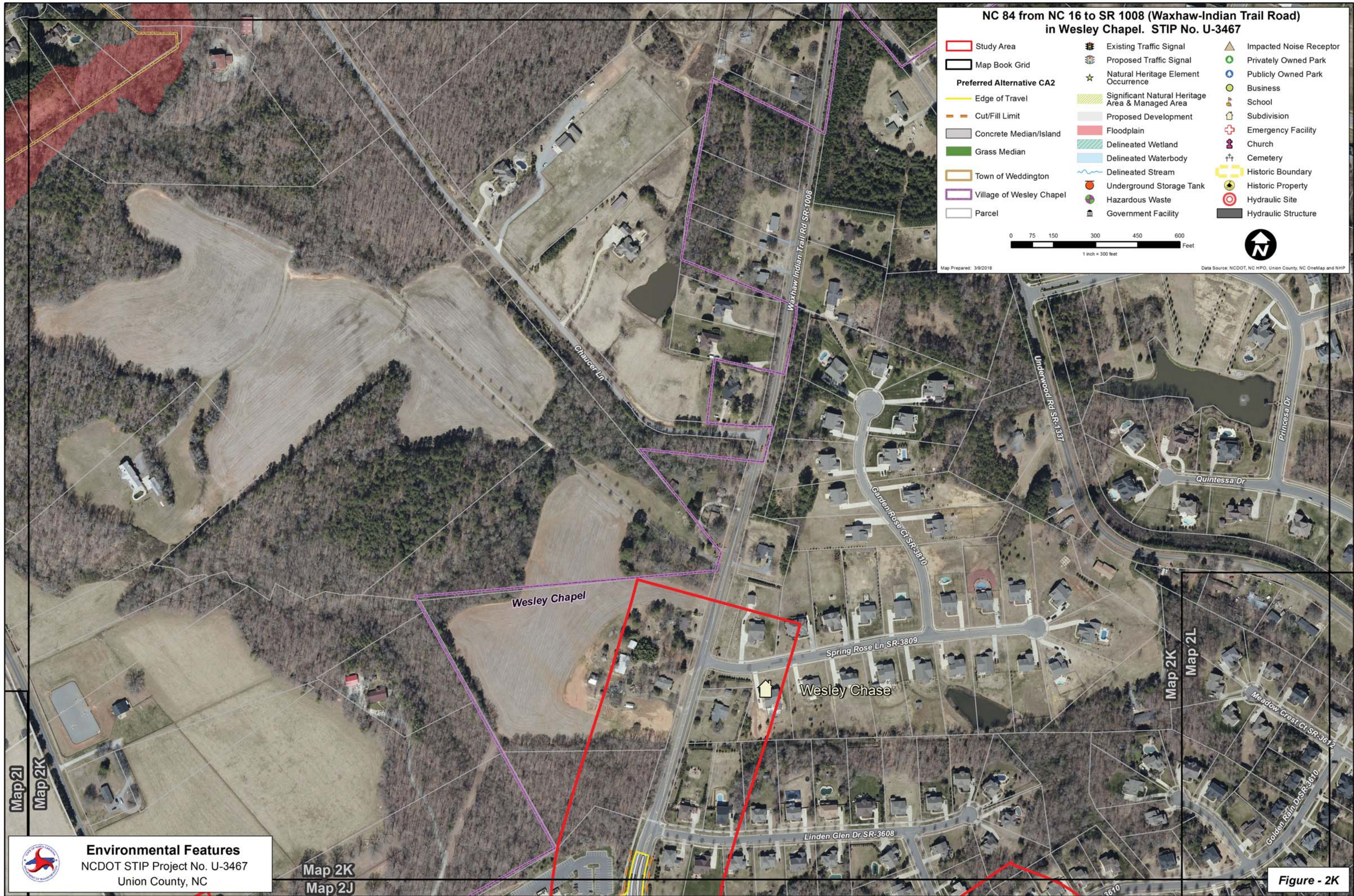


Figure - 2J



Environmental Features
NCDOT STIP Project No. U-3467
Union County, NC

Figure - 2K

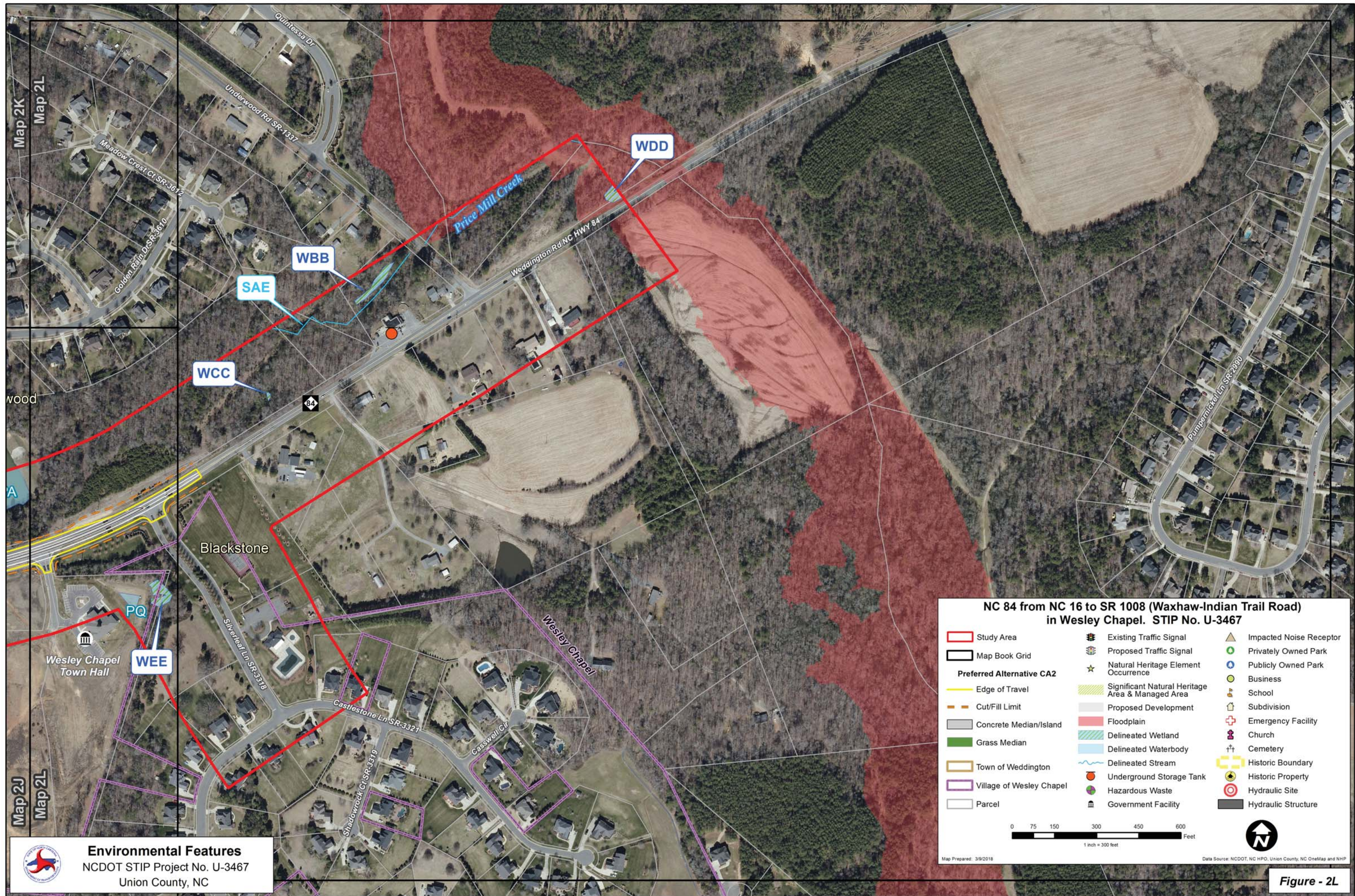


Figure - 2L