

STIPULATION FOR REUSE:
 THESE PLANS AND SPECIFICATIONS ARE THE PROPERTY OF AMERICAN ENGINEERING AND CONSULTING SERVICES, INC. AND ARE NOT TO BE REPRODUCED OR TRANSMITTED IN ANY FORM OR BY ANY MEANS, ELECTRONIC OR MECHANICAL, INCLUDING PHOTOCOPYING, RECORDING, OR BY ANY INFORMATION STORAGE AND RETRIEVAL SYSTEM, WITHOUT THE WRITTEN PERMISSION OF AMERICAN ENGINEERING AND CONSULTING SERVICES, INC.

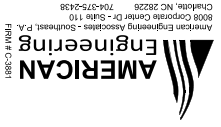
AMERICAN ENGINEERING AND CONSULTING SERVICES, INC.
 1888 J.P. WALKER DRIVE, SUITE 110
 CHARLOTTE, NORTH CAROLINA 28208
 PHONE: 704-479-2438
 FAX: 704-479-2438

Marsh Properties
 Ardey Kell Road Extension
 and Intersection with
 Tilley Morris Road (SR 3445)
 Charlotte, Mecklenburg County
 North Carolina

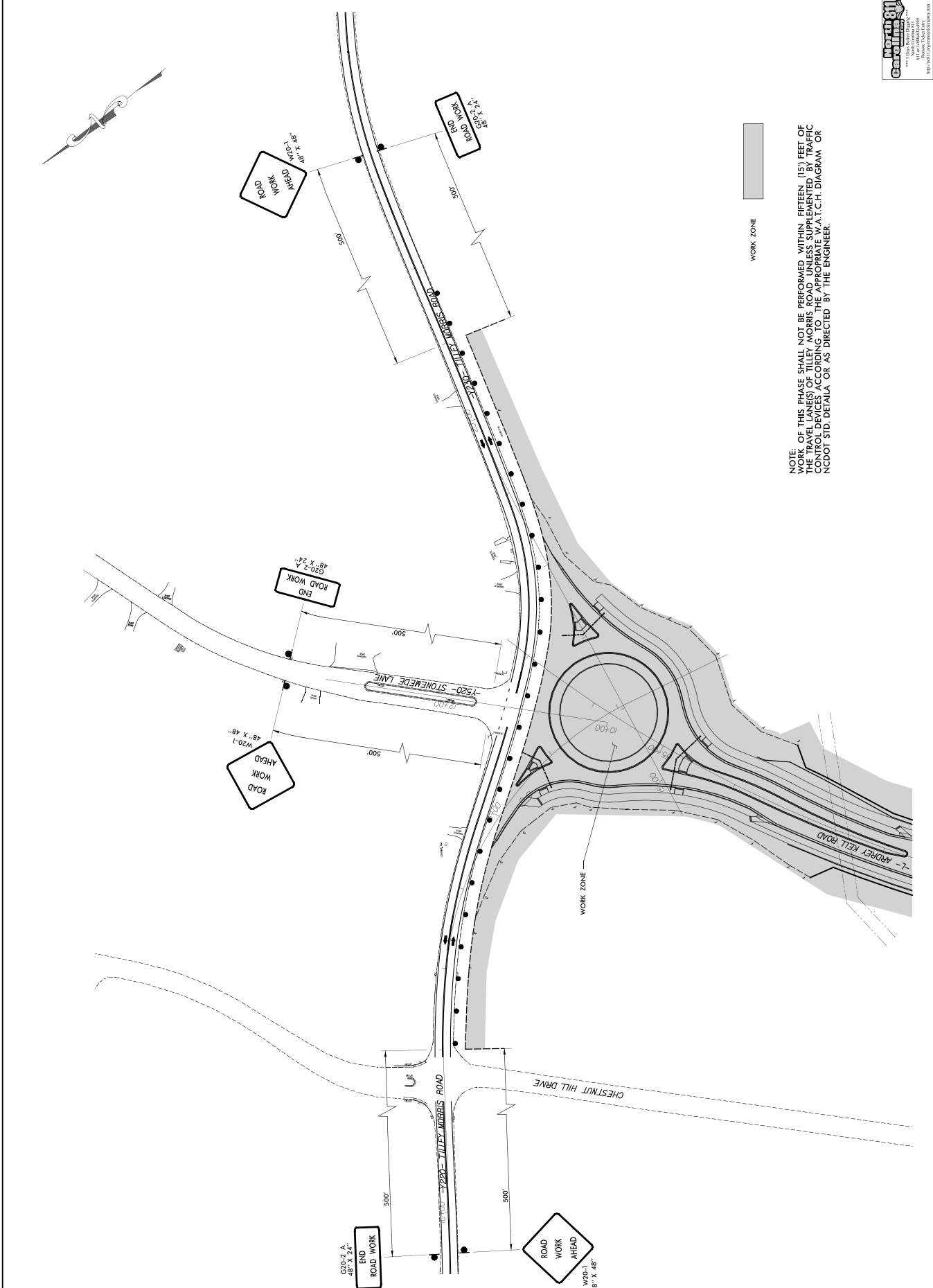


NO.	DESCRIPTION	DATE

JOB NUMBER: C4001A
 DESIGNED BY: JHW
 DRAWN BY: JHW
 SCALE: 1"=50'
 DATE: 3/16/16



TRAFFIC CONTROL PLAN
 PHASE 1
 SHEET R7.2



NOTE: OF THIS PHASE SHALL NOT BE PERFORMED WITHIN FIFTEEN (15') FEET OF THE TRAVEL LANE(S) OF TILLEY MORRIS ROAD UNLESS SUPPLEMENTED BY TRAFFIC CONTROL DEVICES ACCORDING TO THE APPROPRIATE W.A.T.C.H. DIAGRAM OR NCDOT STD. DETAILS OR AS DIRECTED BY THE ENGINEER.



Geotechnical Engineering
 1100 S. W. 13th St., Suite 100
 Ft. Lauderdale, FL 33304
 Phone: 754-561-1100
 Fax: 754-561-1101
 www.geotechnical-engineering.com



TRAFFIC CONTROL PLAN PHASE 2

SHEET R7.3

AMERICAN Engineering
 American Engineering Associates - Southeast, P.A.
 1800 Corporate Center Dr. - Suite 110
 Charlotte, NC 28226
 704-779-2438

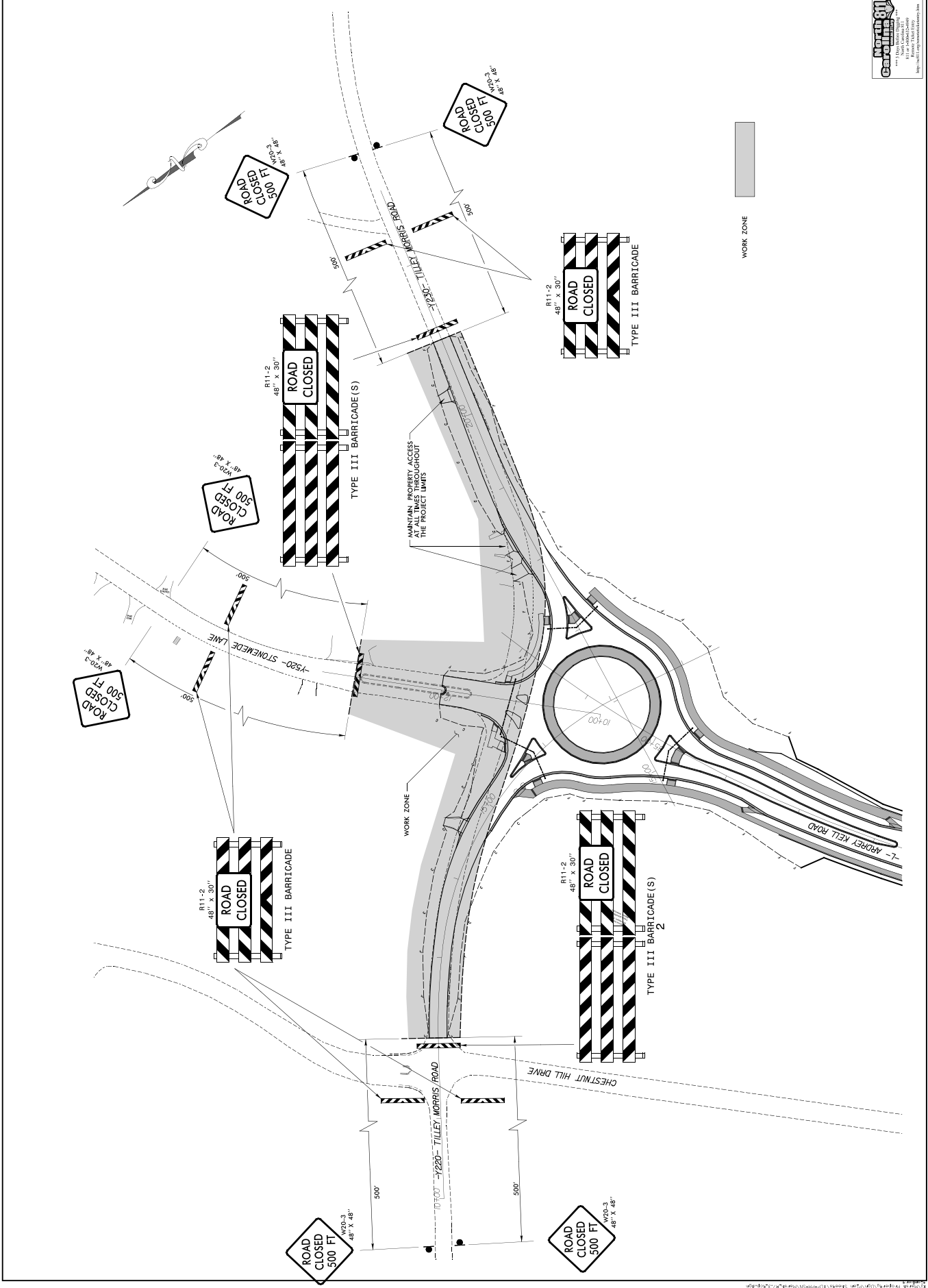
JOB NUMBER: CH00181
 DESIGNED BY: JML
 DRAWN BY: JML
 SCALE: 1"=50'
 DATE: 3/16/16

MODIFICATION LOG



Marsh Properties
 Ardey Kell Road Extension
 and Intersection with
 Tilley Morris Road (SR 3445)
 Charlotte, Mecklenburg County
 North Carolina

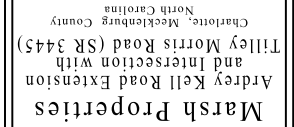
STIPULATION FOR REUSE:
 THESE PLANS AND THE INFORMATION CONTAINED HEREIN ARE THE PROPERTY OF AMERICAN ENGINEERING ASSOCIATES - SOUTHEAST, P.A. AND ARE TO BE USED ONLY FOR THE PROJECT AND SITE SPECIFICALLY IDENTIFIED HEREON. ANY REUSE OF THESE PLANS OR INFORMATION FOR ANY OTHER PROJECT OR SITE WITHOUT THE WRITTEN CONSENT OF AMERICAN ENGINEERING ASSOCIATES - SOUTHEAST, P.A. IS STRICTLY PROHIBITED.



WORK ZONE

STIPULATION FOR REUSE:
 THE DESIGN AND CONSTRUCTION OF THIS PROJECT IS BASED ON THE INFORMATION PROVIDED TO THE ENGINEER BY THE CLIENT. THE ENGINEER HAS CONDUCTED VISUAL GENERAL VERIFICATION OF THE INFORMATION PROVIDED TO HIM. THE ENGINEER HAS NOT CONDUCTED A FIELD SURVEY OF THE PROJECT. THE ENGINEER'S RESPONSIBILITY IS LIMITED TO THE DESIGN AND CONSTRUCTION OF THIS PROJECT. THE ENGINEER IS NOT RESPONSIBLE FOR THE ACCURACY OF THE INFORMATION PROVIDED TO HIM. THE ENGINEER'S LIABILITY IS LIMITED TO THE DESIGN AND CONSTRUCTION OF THIS PROJECT. THE ENGINEER IS NOT RESPONSIBLE FOR THE ACCURACY OF THE INFORMATION PROVIDED TO HIM.

Marsh Properties
 Ardrey Kell Road Extension
 and Intersection with
 Tilley Morris Road (SR 3445)
 Charlotte, Mecklenburg County
 North Carolina



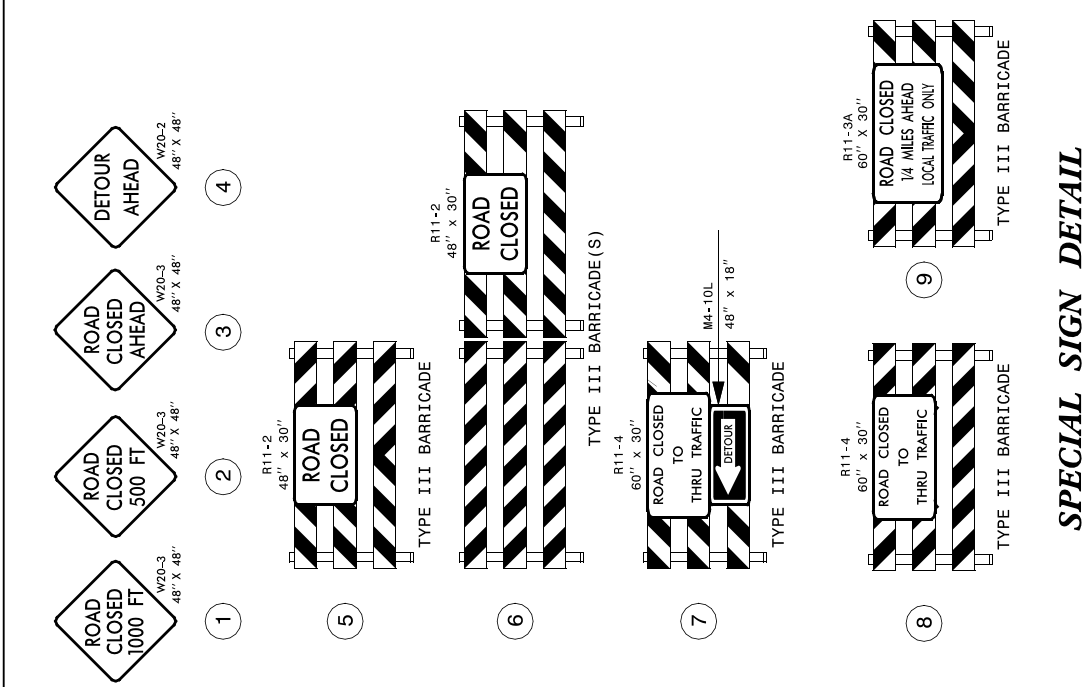
NO.	DESCRIPTION	DATE

AMERICAN ENGINEERING ASSOCIATES - SOUTH EAST, P.A.
 1885 COLUMBIA PIKE
 CHARLOTTE, NC 28228
 704-572-4238
 704-572-4239
 704-572-4240
 704-572-4241
 704-572-4242
 704-572-4243
 704-572-4244
 704-572-4245
 704-572-4246
 704-572-4247
 704-572-4248
 704-572-4249
 704-572-4250

AMERICAN ENGINEERING ASSOCIATES - SOUTH EAST, P.A.
 1885 COLUMBIA PIKE
 CHARLOTTE, NC 28228
 704-572-4238
 704-572-4239
 704-572-4240
 704-572-4241
 704-572-4242
 704-572-4243
 704-572-4244
 704-572-4245
 704-572-4246
 704-572-4247
 704-572-4248
 704-572-4249
 704-572-4250

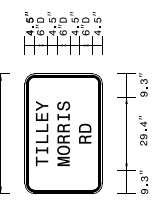
**OFF SITE
 DETOUR
 AND
 SIGNING**

R7.4

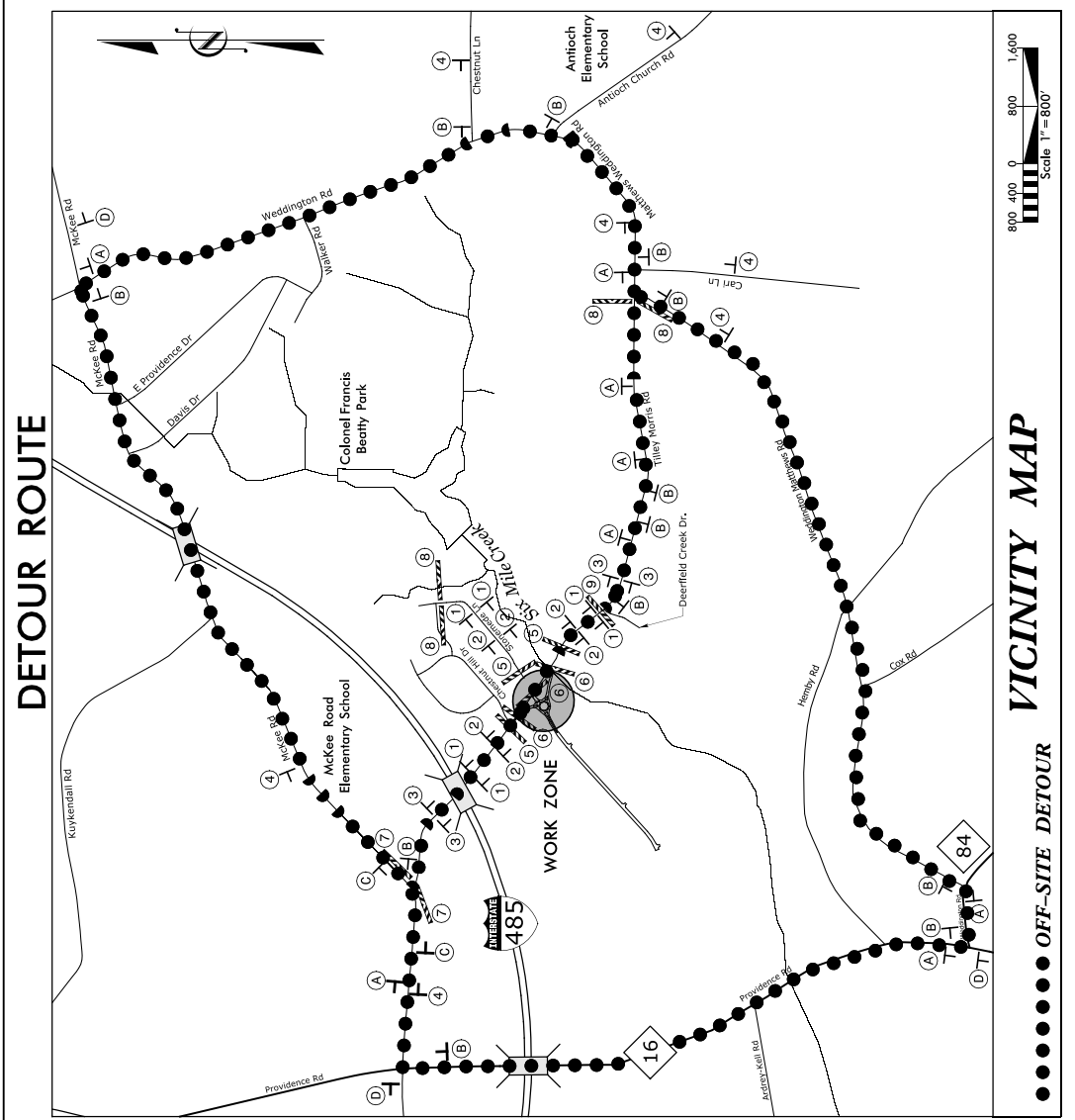


SPECIAL SIGN DETAIL

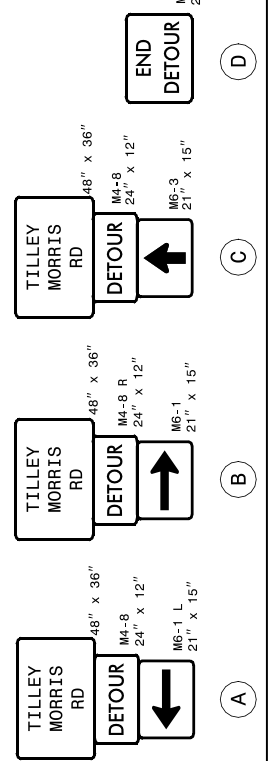
- NOTES:**
- LEGEND AND BORDER SHALL BE DIRECT APPLIED BLACK NON-REFLECTIVE SHEETING.
 - BACKGROUND SHALL BE TYPE VII, VIII, OR IX (PRISMATIC) FLOURESCENT ORANGE RETROREFLECTIVE SHEETING.



BORDER
 R=3"
 TH=0.75"
 TL=0.75"
 BLK ON FLOURESCENT ORANGE



- NOTES:**
- MAINTAIN ACCESS TO FAR AWAY LANE AT ALL TIMES.
 - SEE ROADWAY STANDARDS DRAWING NO. 1101.03, SHEET 1 OF 9 AND SHEET 2 OF 9, FOR ADDITIONAL WORK ZONE SIGNS.
 - ALL DETOUR LOCATIONS ARE APPROXIMATE.
 - ALL DETOUR SIGNS ARE BLACK AND ORANGE UNLESS OTHERWISE NOTED.
 - DETOUR TO LAST NO MORE THAN 21 CONSECUTIVE CALENDAR DAYS.



VICINITY MAP

OFF-SITE DETOUR

DETOUR ROUTE